

Obrót 0 stopni

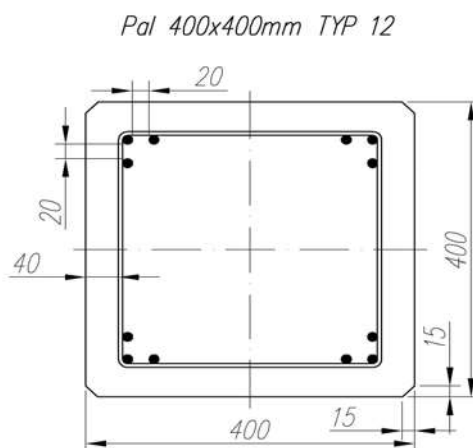
N	M
4475	0
4475	0
4475	0
4475	0
4475	0
4475	0
4475	0
2592	227
2399	238
1989	256
1574	265
1256	249
880	214
667	190
311	142
0	95
-590	0

[kN] [kNm]

Obrót 45 stopni

N	M
4475	0
4475	0
4475	0
4475	0
4475	0
4475	0
4475	0
2897	182
2617	198
1985	219
1307	218
715	187
142	139

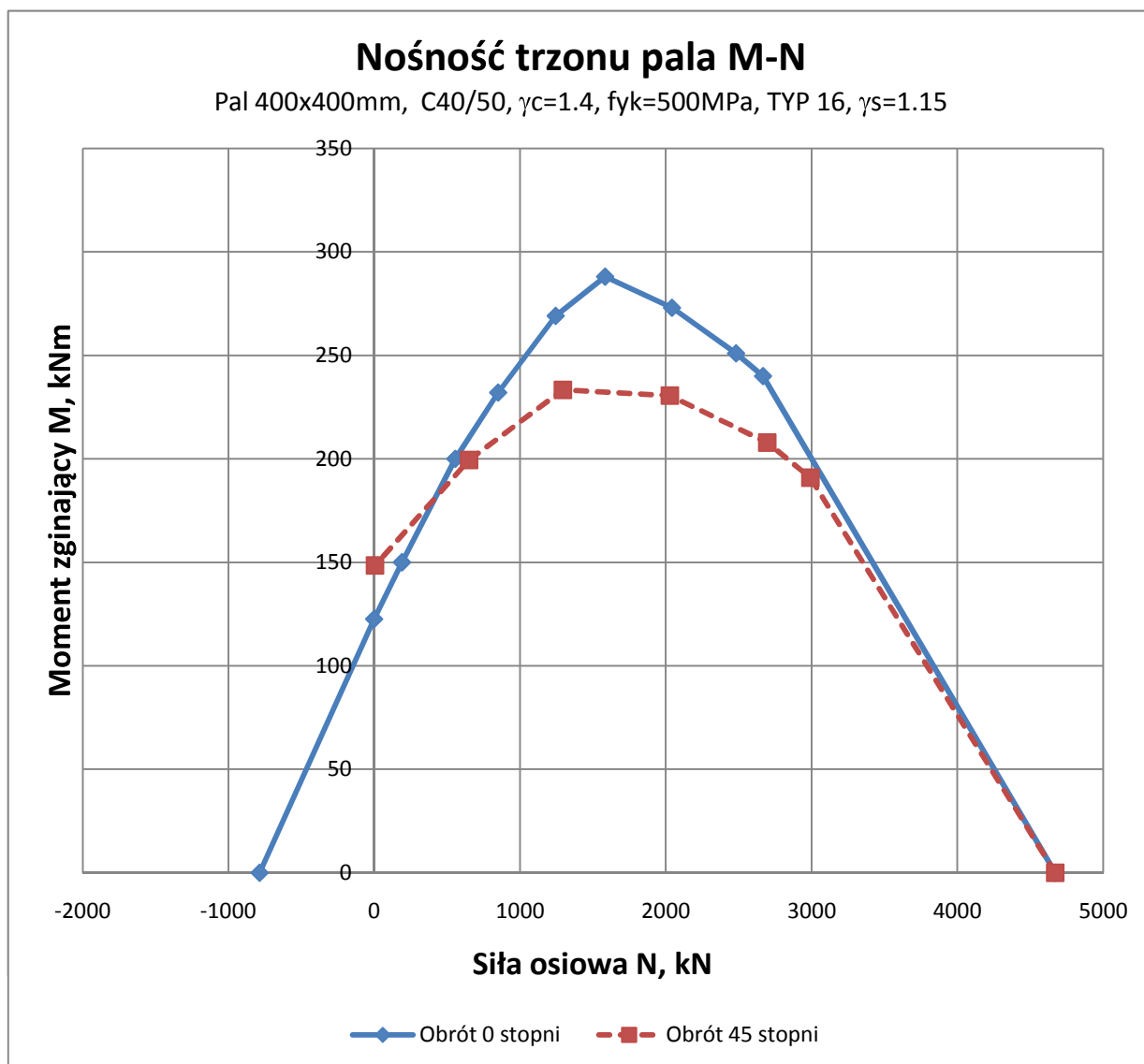
[kN] [kNm]



Zbrojenie główne 12#12mm (1357mm²) ze stali $f_y=500\text{MPa}$
Spirala #5mm ze skokiem co 50/120mm ze stali $f_y=500\text{MPa}$

Otulina obliczeniowa

$c_{obl} = 50.7 \text{ mm}$



Obrót 0 stopni

N	M
4672	0
4672	0
4672	0
4672	0
4672	0
4672	0
4672	0
2668	240
2483	251
2044	273
1585	288
1246	269
851	232
558	200
192	150
0	123
-787	0

[kN] [kNm]

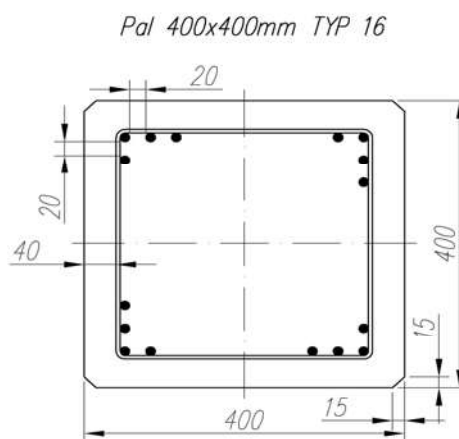
Otulina obliczeniowa

Obrót 45 stopni

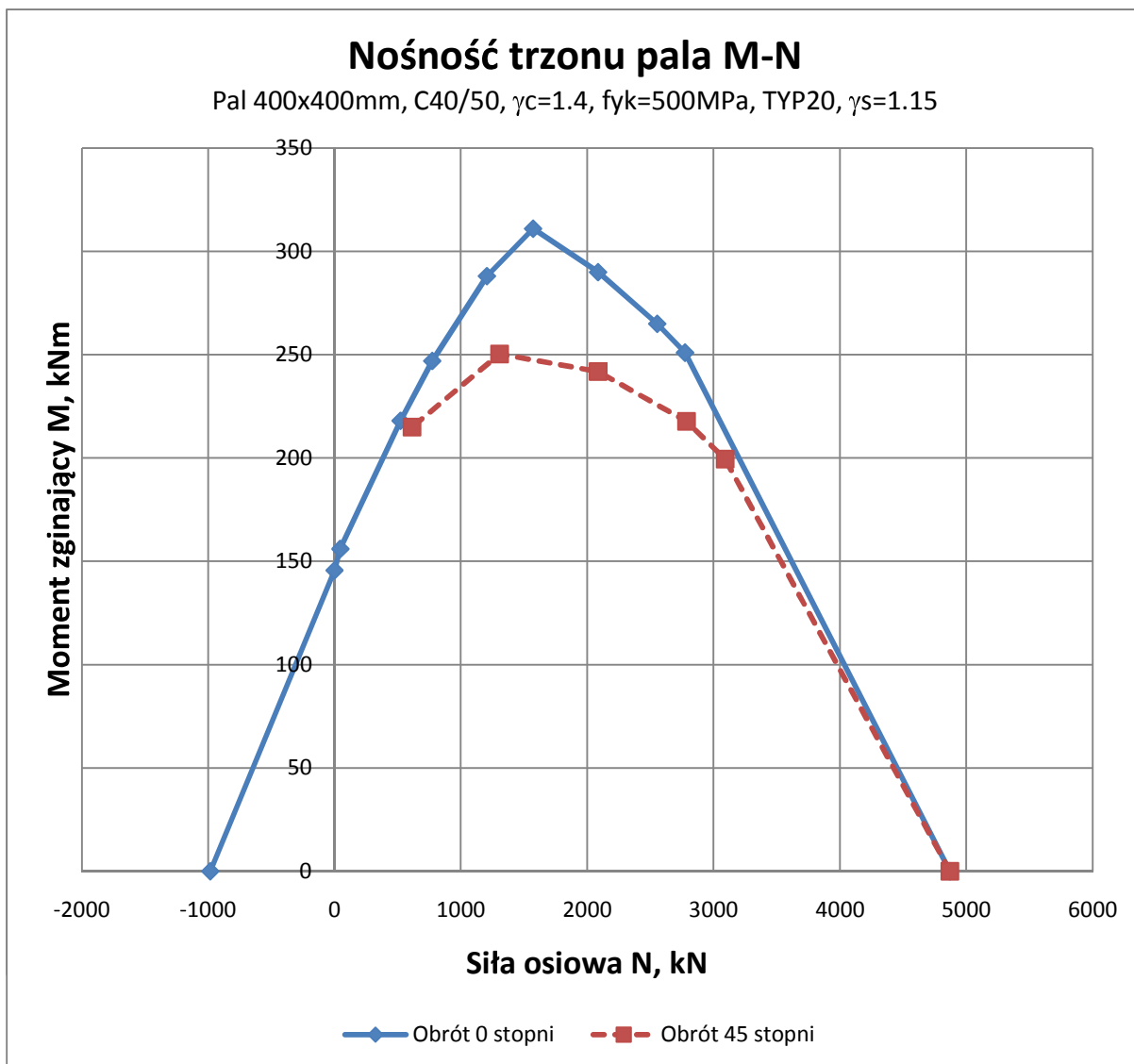
N	M
4672	0
4672	0
4672	0
4672	0
4672	0
4672	0
4672	0
2992	191
2697	208
2028	231
1294	233
652	199
6	148

[kN] [kNm]

$c_{obl} =$ 56 mm



Zbrojenie główne 16#12mm (1810mm²) ze stali $f_y=500\text{MPa}$
Spirala #5mm ze skokiem co 50/120mm ze stali $f_y=500\text{MPa}$



Obrót 0 stopni

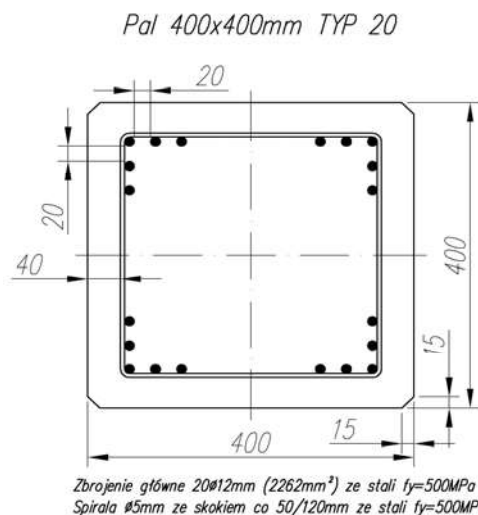
N	M
4869	0
4869	0
4869	0
4869	0
4869	0
4869	0
4869	0
2774	251
2555	265
2086	290
1573	311
1207	288
775	247
524	218
47	156
0	146
-983	0

[kN] [kNm]

Obrót 45 stopni

N	M
4869	0
4869	0
4869	0
4869	0
4869	0
4869	0
4869	0
3092	199
2786	218
2087	242
1308	250
614	215

[kN] [kNm]



Otulina obliczeniowa

$c_{obl} = 59.2 \text{ mm}$